



Indemnify™

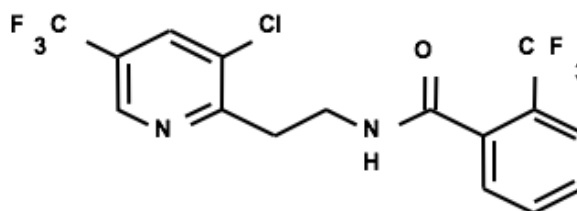
Active Ingredient: fluopyram

Chemical Class: pyridinyl ethyl benzamide

Systemicity: acropetal penetrant

Formulation: suspension concentrate

Signal Word: caution



Best Uses:

- Indemnify™ effectively controls key root-feeding nematodes of turfgrass including but not limited to sting, root knot, ring and has activity on the foliar-feeding nematode *Anguina pacificae*
- Use as a preventive or curative nematicide
- Application is simple and is without course closure or extensive cultural practices, just spray and water into root zone

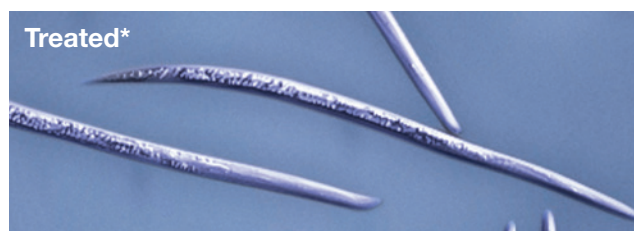
Attributes of Indemnify

- Next generation product is a broad-spectrum nematicide with a new mode of action
- Fast, effective control of many plant parasitic nematodes in turfgrass
- Formulation contains a surfactant to optimize root zone penetration
- Conserves storage space - One 17.1 fl oz Indemnify container treats 1-2 acres
- Ease of use as a nematicide
 - Application as a foliar spray
 - Flexible timing integrates well into current Best Management Practice (BMP) programs
 - Longer duration of control means fewer applications are required
 - Can apply on all turfgrass species which includes, bermudagrass, bentgrass and annual bluegrass
 - Good environmental profile with CAUTION signal word
 - Personal Protection Equipment - long sleeved shirt, long pants, shoes plus socks, chemical-resistant gloves (such as nitrile or butyl)

How To Use Indemnify

- Apply Indemnify prior to and during active root growth to maximize turf recovery without the root-feeding damage caused by plant parasitic nematodes
- Control key nematodes in the fall in southern regions prior to peak golf play in the winter months
- Control key nematodes in the spring in other regions like the transition zone prior to peak golf play in the summer
- Use curatively at first sign of turfgrass stress due to nematodes

Control of Nematodes by Indemnify



Indemnify is a nematicide that blocks cellular respiration resulting in the paralysis and death of the nematode. The needle-like appearance of paralyzed nematodes is a typical response.

**Meloidogyne* sp. treated with 20 ppm fluopyram





Indemnify™

Application Rates for Indemnify

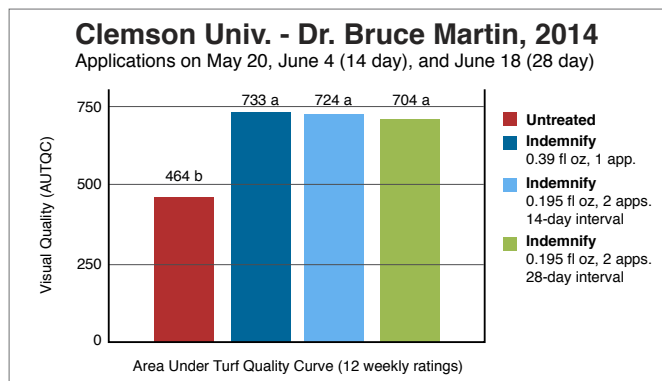
APPLICATION STRATEGY	TIMING (when to apply)	RATES (per 1,000 sq ft)	APPLICATION INTERVAL
Preventive – Turf is not damaged	Begin applications when conditions are favorable for root growth	Broadcast Treatment¹ 1 application at 0.39 fl oz OR 2 applications at 0.195 fl oz	2-4 week
Curative – Turf is damaged	As needed to control nematodes	Spot Treatment² 0.39 fl oz	N/A

¹Do not exceed the maximum use rate of 0.39 fl. oz. per 1,000 ft² per year when using broadcast applications.

²When using curative spot treatments, treat no more than 10,000 ft² per acre per year and do not exceed 4 applications.

Flexibility of Control – Golf Greens with a History of Sting Nematodes

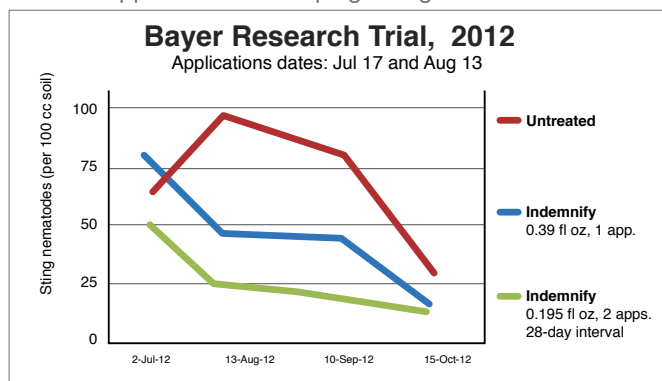
Spring Application on Bermudagrass in South Carolina



Fall Application on Bermudagrass in Florida



Summer Application on Creeping Bentgrass in North Carolina



Data courtesy of Mike Newnam, Bayer

Indemnify demonstration of a curative spot treatment on a green. Nematodes present were sting, root knot, ring and lance. Four applications were made 14 days apart the fall of 2015 on Sep 1, Sep 14, Sep 28 and Oct 12. Photo taken Dec 18, 2015 by Derek Settle, Bayer

backedbybayer.com | @BayerGolf | YouTube | Available on iTunes and Google play: BackedByBayer

ALWAYS READ AND FOLLOW LABEL INSTRUCTIONS.
Bayer CropScience LP, Environmental Science Division, 2 TW Alexander Drive, Research Triangle Park, NC 27709. 1-800-331-2867. www.backedbybayer.com.
Bayer (reg'd), the Bayer Cross (reg'd) and Indemnify™ are trademarks of Bayer. ©2016 Bayer CropScience LP. 16BPG-018-1

